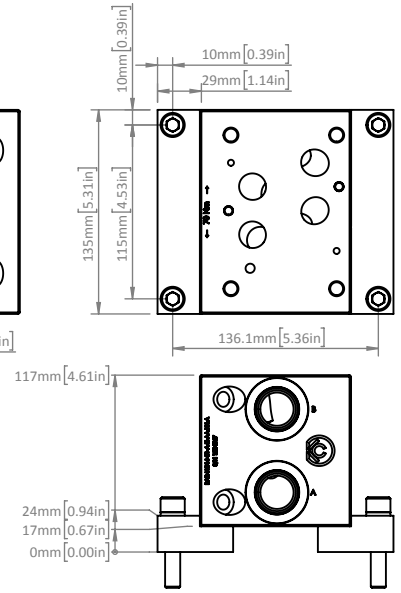


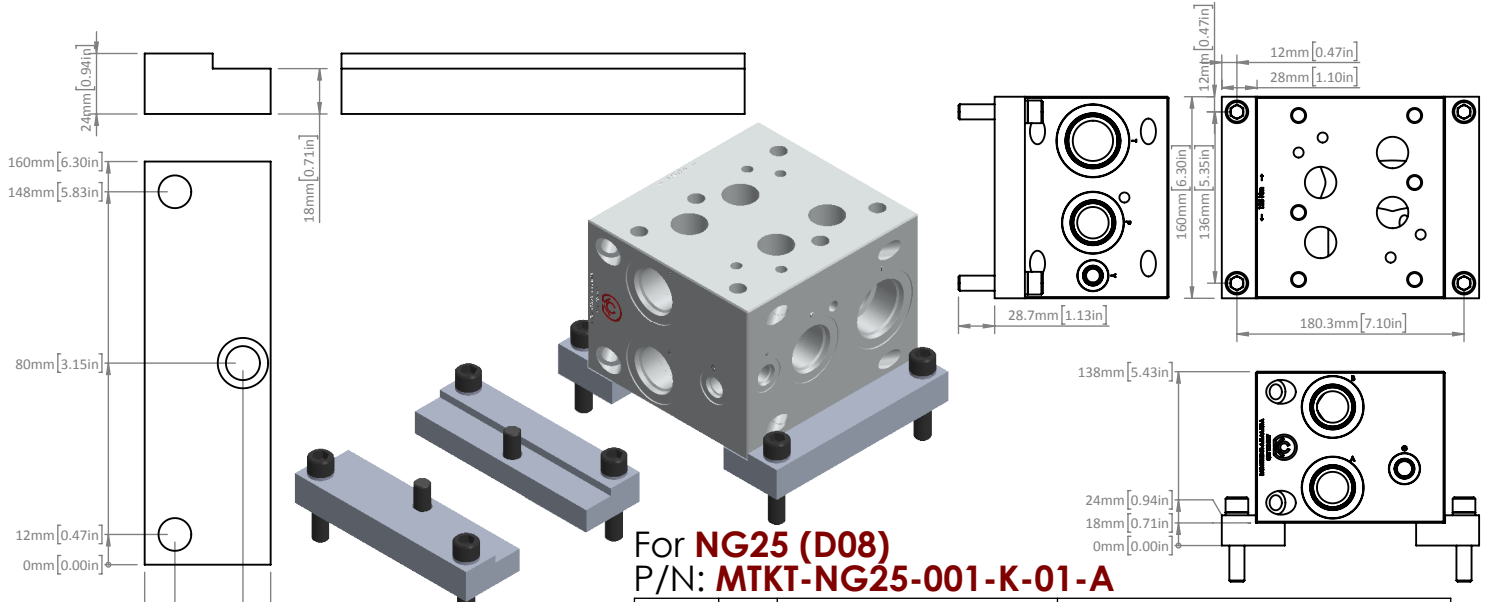
For **NG16 (D07)**
P/N: **MTKT-NG16-001-K-01-A**

ITEM NO.	QTY.	PART NUMBER	DESCRIPTION
1	2	MTKT-NG16-001-B-xx-A	NG16 Mounting Bracket, Base Mount
2	4	BOLT-SHC-M10x50-C-BA-129	M10 x 50 Long Socket Head Cap Screw
3	2	BOLT-SHC-M10x20-C-BA-129	M10 x 20 Long Socket Head Cap Screw
4	6	WASH-HCL-M10-BA	High Collar Lock Washer, M10



MTKT: BAR Mounting Kit

MTKT: BAR Mounting Kit



For **NG25 (D08)**
P/N: **MTKT-NG25-001-K-01-A**

ITEM NO.	QTY.	PART NUMBER	DESCRIPTION
1	2	MTKT-NG25-001-B-xx-A	NG25 Mounting Bracket, Base Mount
2	4	BOLT-SHC-M12x55-C-BA-129	M12 x 55 Long Socket Head Cap Screw
3	2	BOLT-SHC-M12x25-C-BA-129	M12 x 25 Long Socket Head Cap Screw
4	6	WASR-HCL-M12-BA	High Collar Lock Washer, M12

MTKT-	****_	001-	K-	01-	A
<ul style="list-style-type: none"> Product Family- <p>BAR MounTing Kit</p>	<ul style="list-style-type: none"> BAR Size NG16 (D07) NG25 (D08) 	<ul style="list-style-type: none"> Port Type- 001: Foot Mount 	<ul style="list-style-type: none"> Assembly Level K: Complete Kit 	<ul style="list-style-type: none"> Hardware Modifier 01: Aluminum Bracket w/ Steel Bolts 	<ul style="list-style-type: none"> Design Variant A: Design A

Subject to Change: CTLG-01-001A